



9116

CYPRESS GREEN DR

JACKSONVILLE, FL 32256

## ±9,700 SF OFFICE BUILDING AVAILABLE FOR SALE



±9,700 SF  
Available



Professional Office  
Environment



Minutes from  
Interstate 95



35 Parking Spaces  
Available



**Asking Price: \$865,000**

- ◆ Located in the Butler/Baymeadows submarket and easy access to Interstate 95 and JTB
- ◆ Ideal office location for professional service business such as an attorney, CPA, physician, etc.
- ◆ Well appointed with a nice combination of private offices and open floor plan
- ◆ Conveniently located near many popular food and retail shops

For further information, please contact our exclusive agents:

**Scott Henley** Senior VP  
[shenley@phoenixrealty.net](mailto:shenley@phoenixrealty.net)

**Jeffrey Frandsen** Office Specialist  
[jfrandsen@phoenixrealty.net](mailto:jfrandsen@phoenixrealty.net)

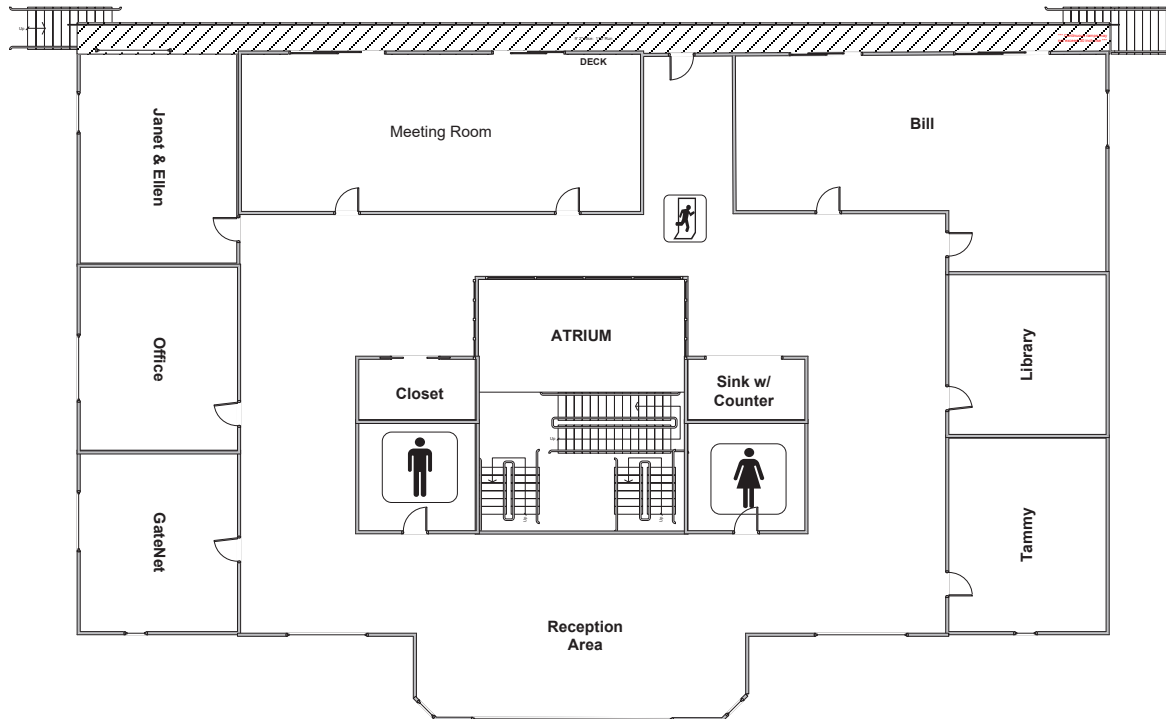
Newmark Phoenix Realty Group, Inc.  
904.399.5222  
10739 Deerwood Park Blvd. #310  
Jacksonville, FL 32256

**Newmark**  
Phoenix Realty Group  
[www.phoenixrealty.net](http://www.phoenixrealty.net)

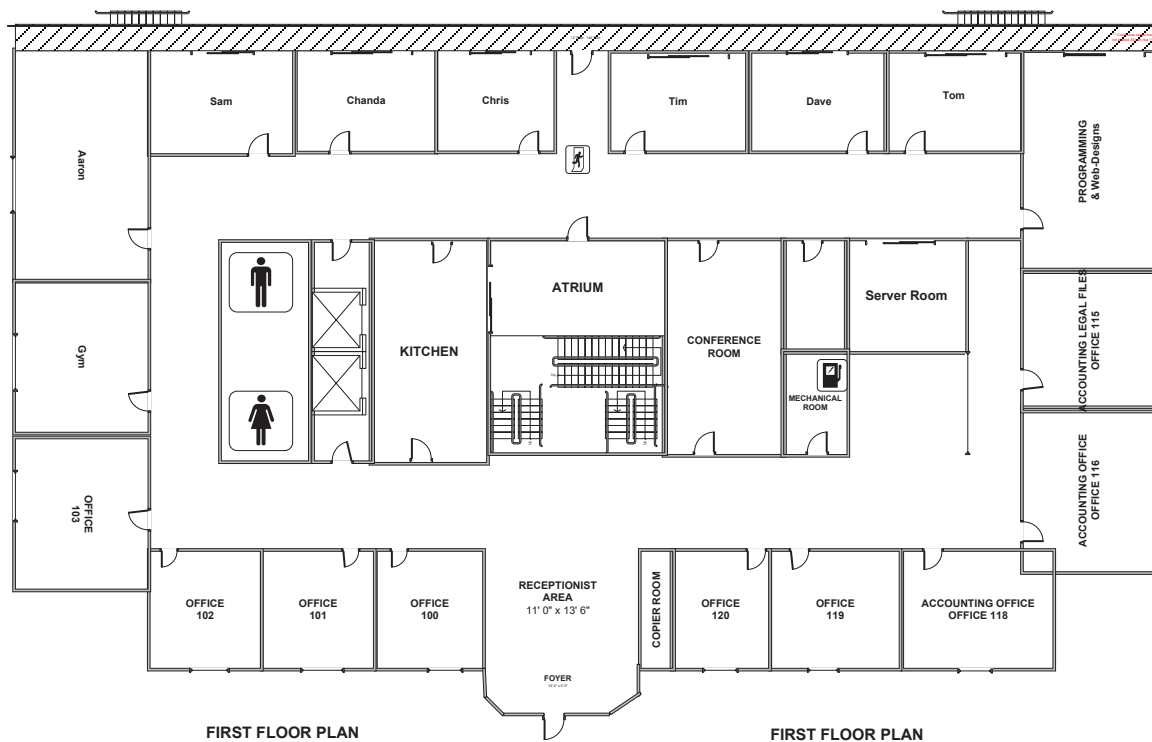


Procuring broker shall only be entitled to a commission, calculated in accordance with the rates approved by our principal only if such procuring broker executes a brokerage agreement acceptable to us and our principal and the conditions as set forth in the brokerage agreement are fully and unconditionally satisfied. Although all information furnished regarding property for sale, rental, or financing is from sources deemed reliable, such information has not been verified and no express representation is made nor is any to be implied as to the accuracy thereof and it is submitted subject to errors, omissions, change of price, rental or other conditions, prior sale, lease or financing, or withdrawal without notice and to any special conditions imposed by our principal.

# FLOOR PLAN



Second Floor



FIRST FLOOR PLAN

FIRST FLOOR PLAN

**Newmark**  
**Phoenix Realty Group**  
[www.phoenixrealty.net](http://www.phoenixrealty.net)

**±9,700 SF Office Building Available FOR SALE**  
 9116 CYPRESS GREEN DRIVE JACKSONVILLE, FL 32256

Procuring broker shall only be entitled to a commission, calculated in accordance with the rates approved by our principal only if such procuring broker executes a brokerage agreement acceptable to us and our principal and the conditions as set forth in the brokerage agreement are fully and unconditionally satisfied. Although all information furnished regarding property for sale, rental, or financing is from sources deemed reliable, such information has not been verified and no express representation is made nor is any to be implied as to the accuracy thereof and it is submitted subject to errors, omissions, change of price, rental or other conditions, prior sale, lease or financing, or withdrawal without notice and to any special conditions imposed by our principal.





**Newmark**  
 Phoenix Realty Group  
[www.phoenixrealty.net](http://www.phoenixrealty.net)

**±9,700 SF Office Building Available FOR SALE**  
 9116 CYPRESS GREEN DRIVE JACKSONVILLE, FL 32256

Procuring broker shall only be entitled to a commission, calculated in accordance with the rates approved by our principal only if such procuring broker executes a brokerage agreement acceptable to us and our principal and the conditions as set forth in the brokerage agreement are fully and unconditionally satisfied. Although all information furnished regarding property for sale, rental, or financing is from sources deemed reliable, such information has not been verified and no express representation is made nor is any to be implied as to the accuracy thereof and it is submitted subject to errors, omissions, change of price, rental or other conditions, prior sale, lease or financing, or withdrawal without notice and to any special conditions imposed by our principal.