



**9000**  
**CYPRESS GREEN DR**

JACKSONVILLE, FL 32256

**UP TO ±10,848 SF OFFICE SPACE AVAILABLE FOR LEASE**



±5,425 - ±10,848  
SF Available



Professional Office  
Environment



Minutes from  
Interstate 95



40+ Parking  
Spaces Available



**Lease Rate: \$17.00/SF**

- ♦ Available For Lease ±5,425 SF - ±10,848 SF
- ♦ Conveniently located in the heart of the Baymeadows Business District near retail, restaurants and banking with quick access to I-95, Southside Blvd. and I-295 and only minutes from Downtown Jacksonville.
- ♦ Nice mix of spacious private offices & open areas overlooking the old Baymeadows Golf Course.
- ♦ Possibility of Leasing Fully Furnished
- ♦ Abundant Surface Parking
- ♦ Outdoor Deck Area

For further information, please contact our exclusive agents:

**Dan Stover**

Senior Vice President

[dstover@phoenixrealty.net](mailto:dstover@phoenixrealty.net)

Newmark Phoenix Realty Group, Inc.

904.399.5222

10739 Deerwood Park Blvd. #310

Jacksonville, FL 32256

**Newmark**

Phoenix Realty Group

[www.phoenixrealty.net](http://www.phoenixrealty.net)

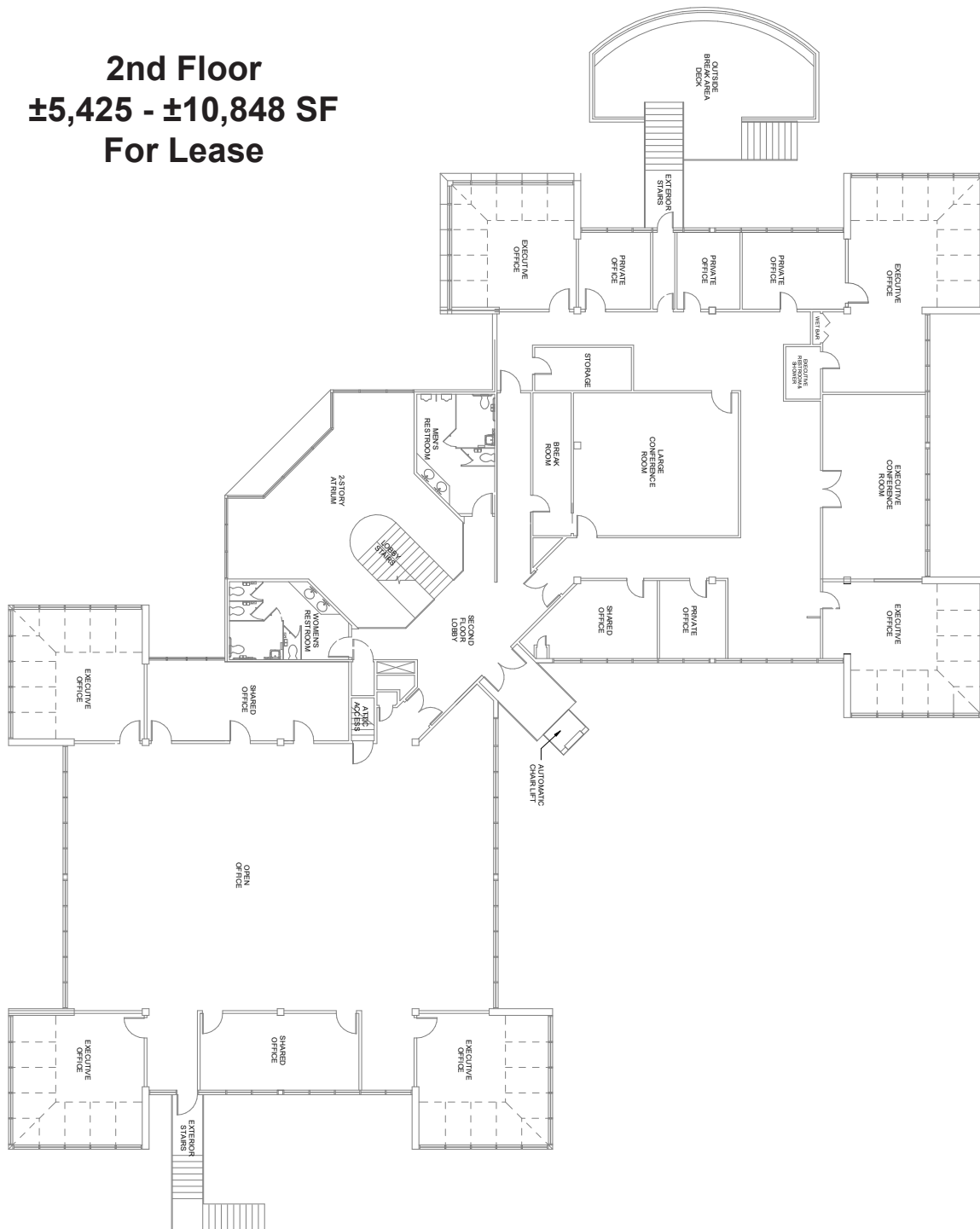


Procuring broker shall only be entitled to a commission, calculated in accordance with the rates approved by our principal only if such procuring broker executes a brokerage agreement acceptable to us and our principal and the conditions as set forth in the brokerage agreement are fully and unconditionally satisfied. Although all information furnished regarding property for sale, rental, or financing is from sources deemed reliable, such information has not been verified and no express representation is made nor is any to be implied as to the accuracy thereof and it is submitted subject to errors, omissions, change of price, rental or other conditions, prior sale, lease or financing, or withdrawal without notice and to any special conditions imposed by our principal.

# FLOOR PLAN



**2nd Floor**  
**±5,425 - ±10,848 SF**  
**For Lease**



**Newmark**  
Phoenix Realty Group  
[www.phoenixrealty.net](http://www.phoenixrealty.net)

**±5,425 - ±10,848 SF Office Building Available FOR LEASE**  
9000 CYPRESS GREEN DRIVE JACKSONVILLE, FL 32256

Procuring broker shall only be entitled to a commission, calculated in accordance with the rates approved by our principal only if such procuring broker executes a brokerage agreement acceptable to us and our principal and the conditions as set forth in the brokerage agreement are fully and unconditionally satisfied. Although all information furnished regarding property for sale, rental, or financing is from sources deemed reliable, such information has not been verified and no express representation is made nor is any to be implied as to the accuracy thereof and it is submitted subject to errors, omissions, change of price, rental or other conditions, prior sale, lease or financing, or withdrawal without notice and to any special conditions imposed by our principal.





**Newmark**

Phoenix Realty Group

[www.phoenixrealty.net](http://www.phoenixrealty.net)

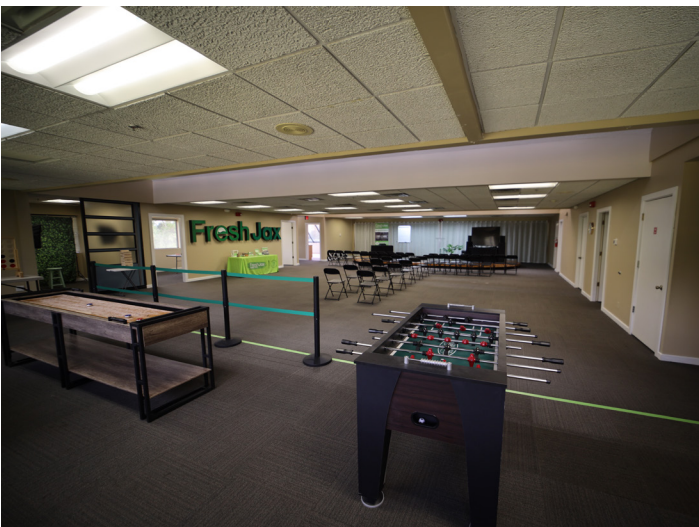
**±5,425 - ±10,848 SF Office Building Available FOR LEASE**

9000 CYPRESS GREEN DRIVE JACKSONVILLE, FL 32256

Procuring broker shall only be entitled to a commission, calculated in accordance with the rates approved by our principal only if such procuring broker executes a brokerage agreement acceptable to us and our principal and the conditions as set forth in the brokerage agreement are fully and unconditionally satisfied. Although all information furnished regarding property for sale, rental, or financing is from sources deemed reliable, such information has not been verified and no express representation is made nor is any to be implied as to the accuracy thereof and it is submitted subject to errors, omissions, change of price, rental or other conditions, prior sale, lease or financing, or withdrawal without notice and to any special conditions imposed by our principal.



# PHOTOS



**Newmark**  
Phoenix Realty Group  
[www.phoenixrealty.net](http://www.phoenixrealty.net)

**±5,425 - ±10,848 SF Office Building Available FOR LEASE**  
9000 CYPRESS GREEN DRIVE JACKSONVILLE, FL 32256

Procuring broker shall only be entitled to a commission, calculated in accordance with the rates approved by our principal only if such procuring broker executes a brokerage agreement acceptable to us and our principal and the conditions as set forth in the brokerage agreement are fully and unconditionally satisfied. Although all information furnished regarding property for sale, rental, or financing is from sources deemed reliable, such information has not been verified and no express representation is made nor is any to be implied as to the accuracy thereof and it is submitted subject to errors, omissions, change of price, rental or other conditions, prior sale, lease or financing, or withdrawal without notice and to any special conditions imposed by our principal.