


BAYWOOD CENTER, BUILDING III
9428 Baymeadows Rd, Jacksonville, FL 32256



- **Prominent building signage available**
 - **Backup generator available**
 - Highly visible and accessible from Baymeadows Road, with quick access to I-95, Southside Blvd, and I-295
 - Baymeadows access assisted by dedicated traffic cop for afternoon rush hours
 - Recently renovated and beautifully landscaped
 - Conveniently located near retail, restaurants & banking
 - On-site café
 - Amenity furnished conference room available by reservation
- OWNED AND OPERATED BY
- 
- A large, leafy green tree with a thick trunk and a full, rounded canopy of leaves, positioned in the bottom right corner of the slide.

OWNED AND OPERATED BY



ACORN PROPERTY HOLDINGS

AVAILABLE SUITES

Suite		Size (RSF)	Asking Rate (\$/RSF/YR)
134	EXEC OFFICE	274	\$575/MONTH
136	EXEC OFFICE	270	\$575/MONTH
170	PROMINENT ENTRY, GLASS DOORS, HIGH CEILING	3,247	\$19.00
240	DOUBLE FULL GLASS ENTRY	1,270	\$18.25
250	EXISTING FINISHES IN EXCELLENT CONDITION	2,749	\$18.75
300	DOUBLE FULL GLASS ENTRY AT ELEVATORS	4,572	\$18.50
350	ENDCAP UNTIL WITH THREE WALLS OF GLASS. EXISTING FINISHES IN EXCELLENT SHAPE. INTERIOR GLASS	4,662	\$18.75
450	ENDCAP SUITE WITH THREE WALLS OF GLASS	5,600	\$18.50
560	DOUBLE FULL GLASS ENTRY AT ELEVATORS	6,806	\$19.00
600	PROMINENT, DOUBLE DOOR ENTRY AT ELEVATORS	3,993	\$19.00
630	ENDCAP SUITE WITH THREE WALLS OF GLASS	4,289	\$18.50
650	LAKE VIEW	6,944	\$18.25
680	ENDCAP SUITE WITH THREE WALLS OF GLASS	4,365	\$18.50

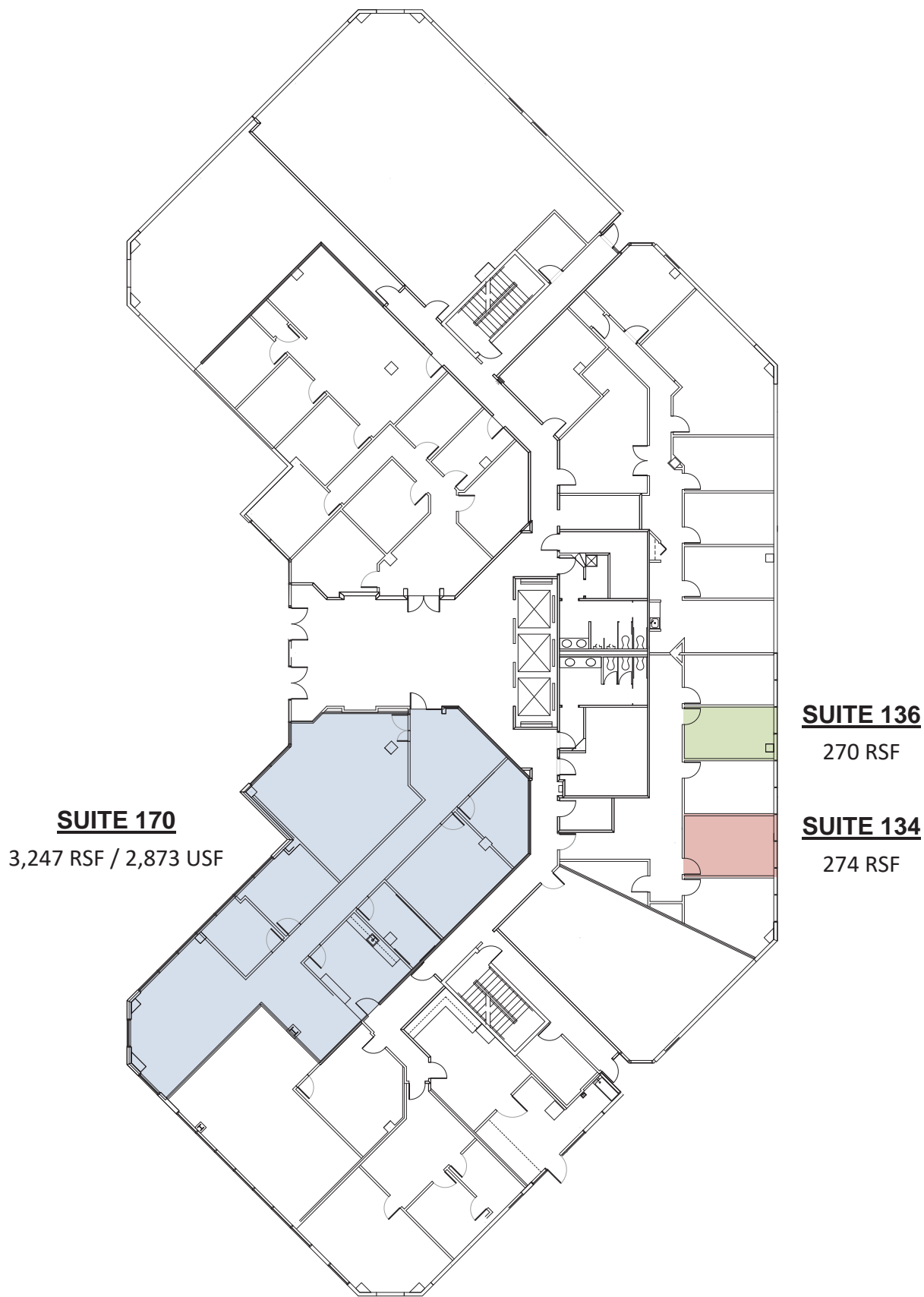
Joe Scavetto / VP Office Brokerage
904.424.9000 / jscavetto@phoenixrealty.net

Connor Palmisano / Associate
904.613.5226 / cpalmisano@phoenixrealty.net



COPYRIGHT © 2020 PHOENIX REALTY GROUP, INC. · 10739 DEERWOOD PARK BLVD, SUITE 310 · JACKSONVILLE, FL 32256 · 904.399.5222. *INDEPENDENTLY OWNED AND OPERATED.*

LAST UPDATED 12/16/2020 4:42 PM



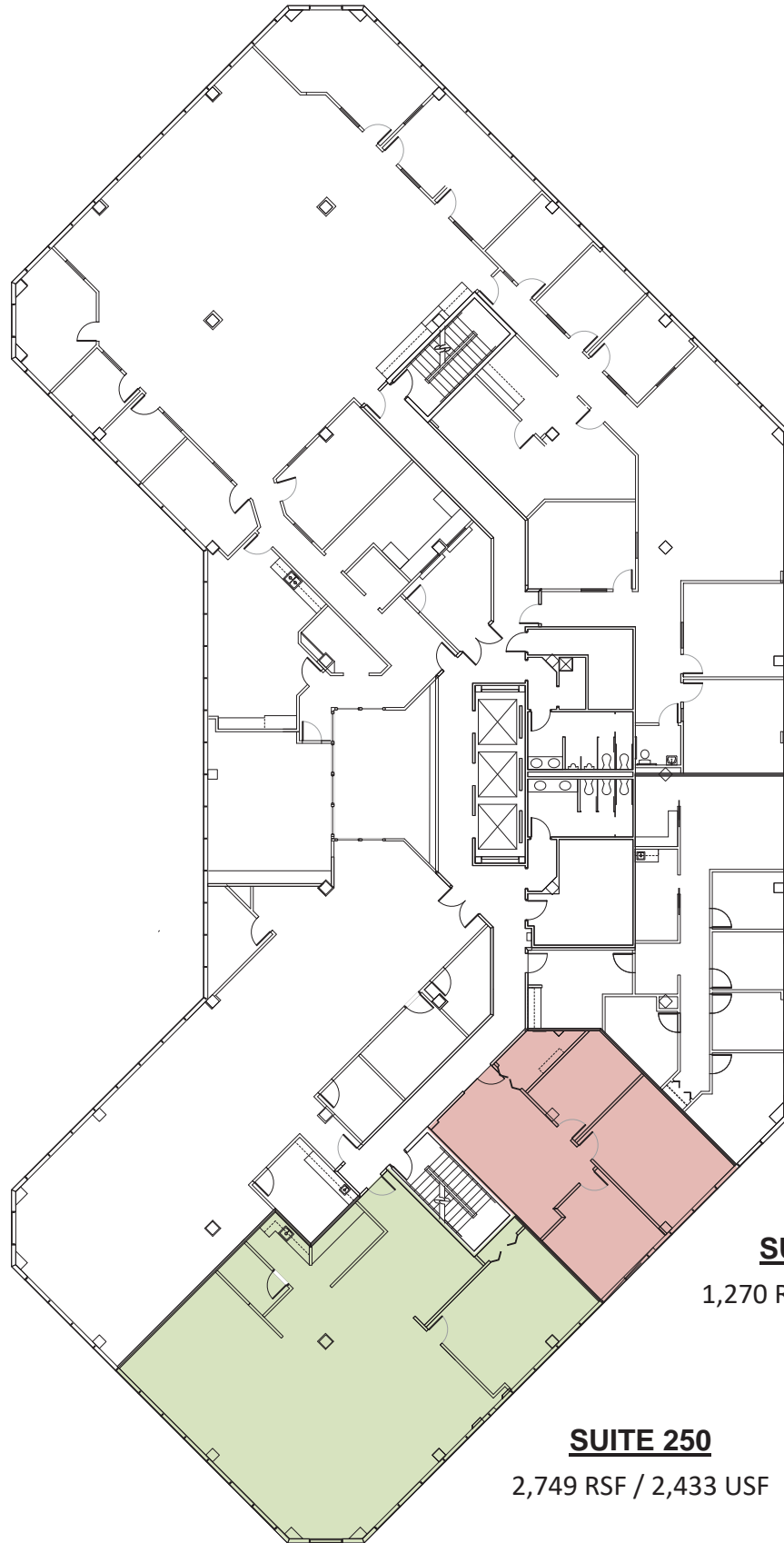
Joe Scavetto / VP Office Brokerage
904.424.9000 / jscavetto@phoenixrealty.net

Connor Palmisano / Associate
904.613.5226 / cpalmisano@phoenixrealty.net



BAYWOOD CENTER, BUILDING III

9428 Baymeadows Rd, Jacksonville, FL 32256



SUITE 240

1,270 RSF / 1,124 USF

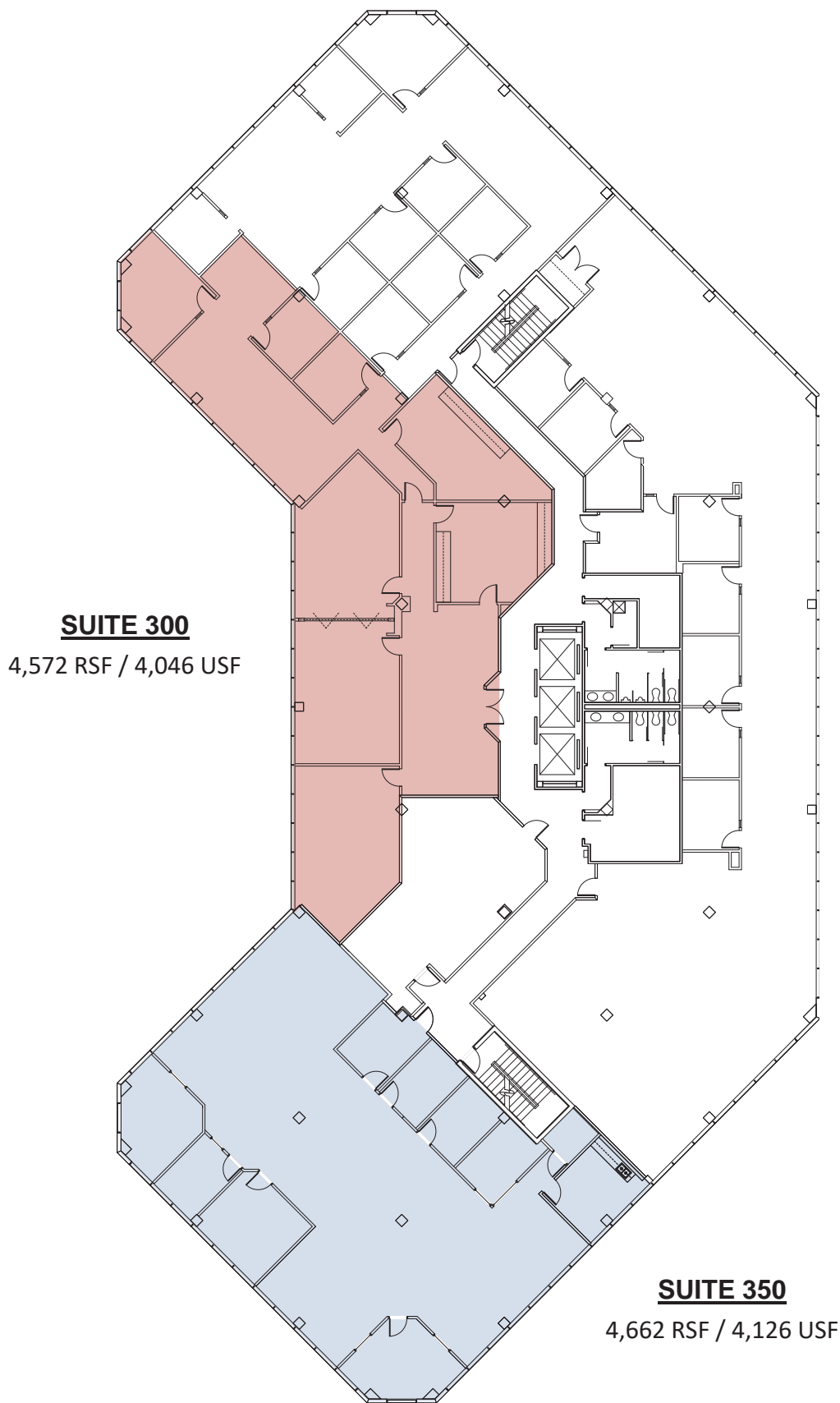
SUITE 250

2,749 RSF / 2,433 USF

Joe Scavetto / VP Office Brokerage
904.424.9000 / jscavetto@phoenixrealty.net

Connor Palmisano / Associate
904.613.5226 / cpalmisano@phoenixrealty.net





Joe Scavetto / VP Office Brokerage
904.424.9000 / jscavetto@phoenixrealty.net

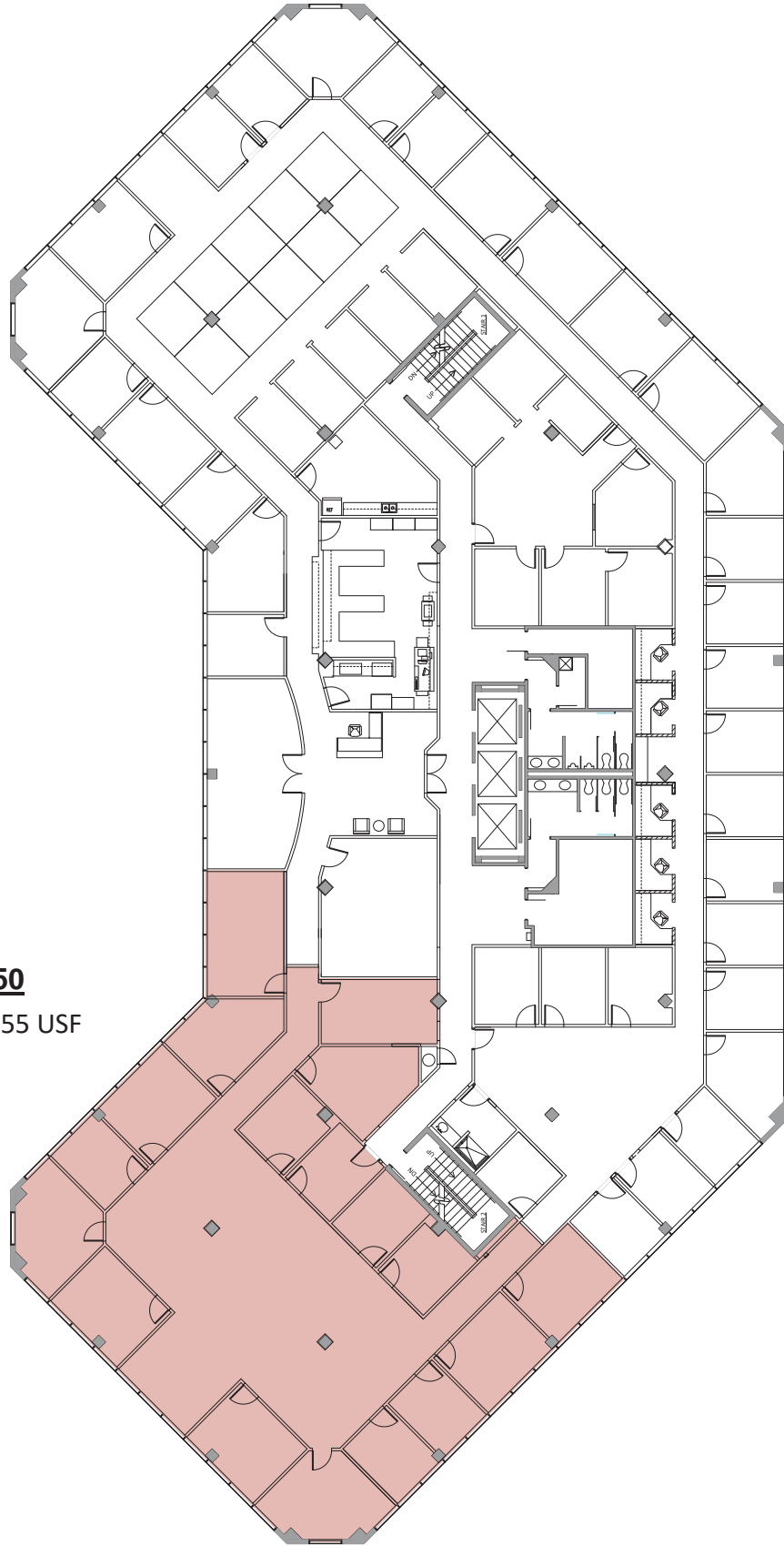
Connor Palmisano / Associate
904.613.5226 / cpalmisano@phoenixrealty.net



BAYWOOD CENTER, BUILDING III

9428 Baymeadows Rd, Jacksonville, FL 32256

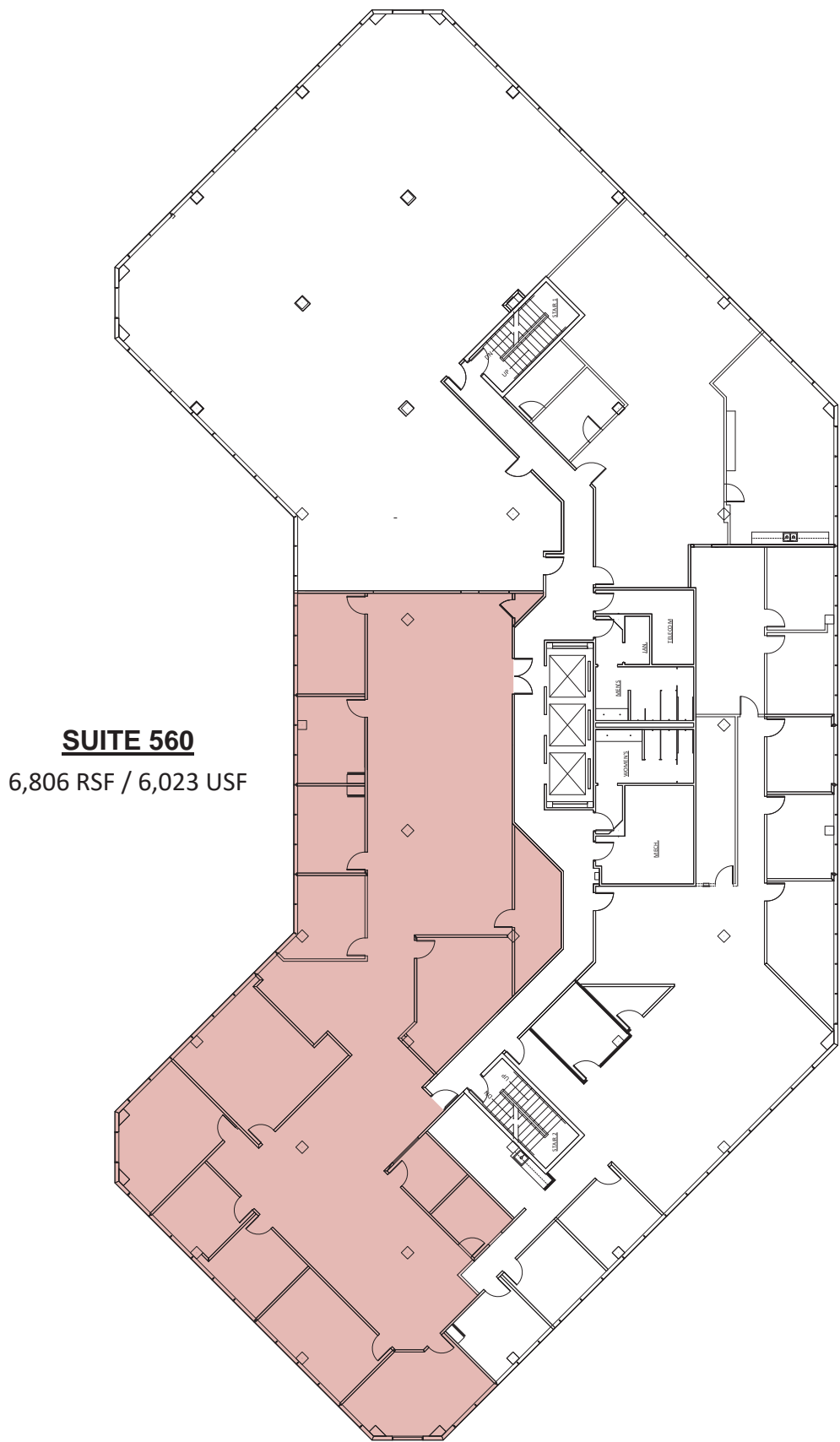
SUITE 450
5,600 RSF / 4,955 USF



Joe Scavetto / VP Office Brokerage
904.424.9000 / jscavetto@phoenixrealty.net

Connor Palmisano / Associate
904.613.5226 / cpalmisano@phoenixrealty.net





SUITE 560
6,806 RSF / 6,023 USF

Joe Scavetto / VP Office Brokerage
904.424.9000 / jscavetto@phoenixrealty.net

Connor Palmisano / Associate
904.613.5226 / cpalmisano@phoenixrealty.net



BAYWOOD CENTER, BUILDING III

9428 Baymeadows Rd, Jacksonville, FL 32256

SUITE 630

4,289 RSF / 3,796 USF

SUITE 650

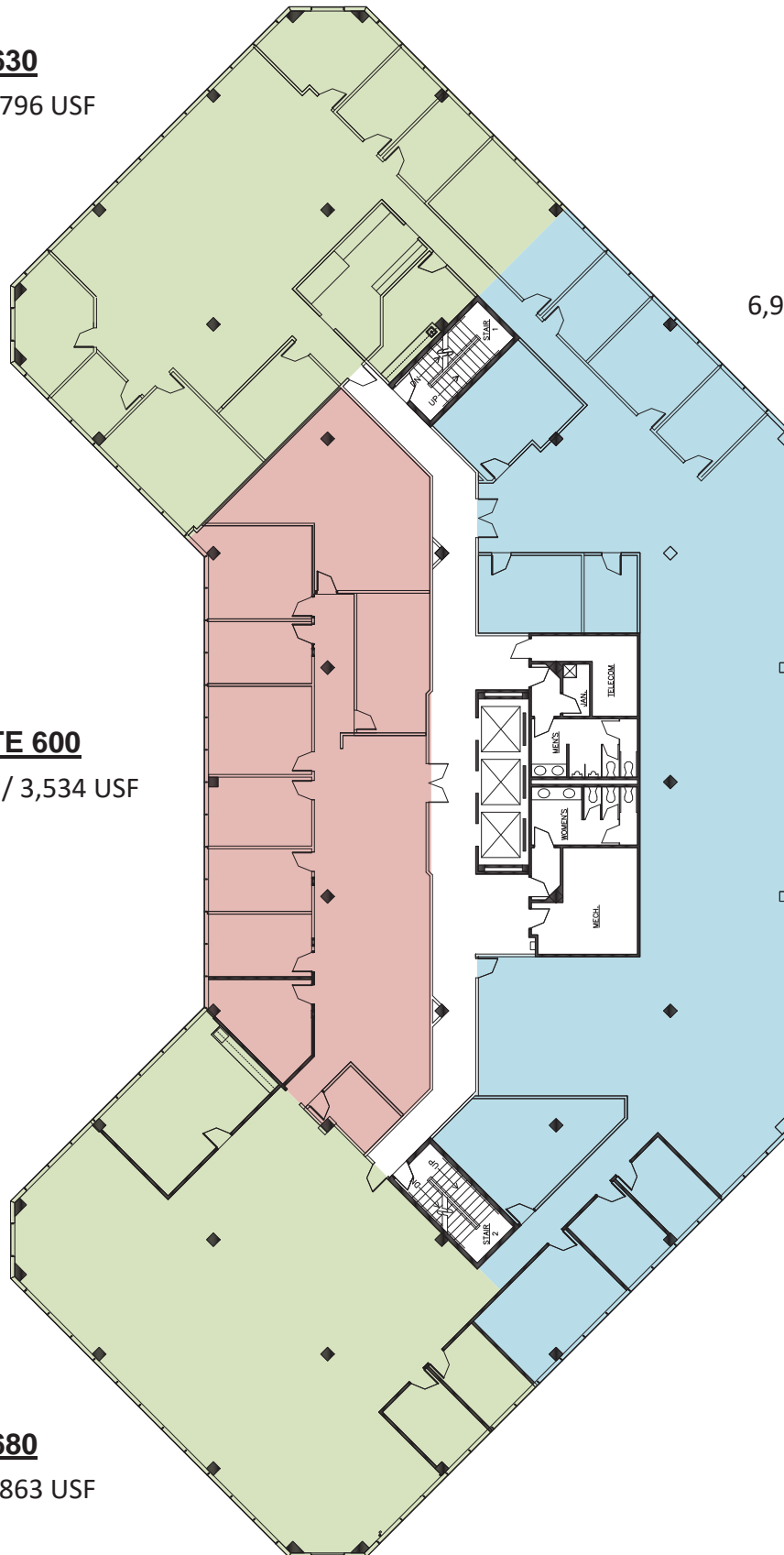
6,944 RSF / 6,145 USF

SUITE 600

3,993 RSF / 3,534 USF

SUITE 680

4,365 RSF / 3,863 USF



Joe Scavetto / VP Office Brokerage
904.424.9000 / jscavetto@phoenixrealty.net

Connor Palmisano / Associate
904.613.5226 / cpalmisano@phoenixrealty.net

